

RATE OF RISE HEAT DETECTOR

CATALOGUE Model. **FPE.CL-183**

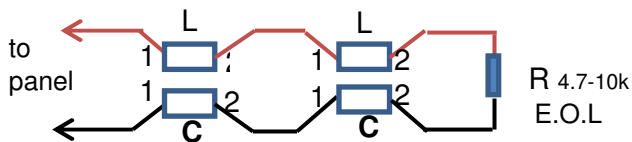
CERTIFICATE ISO 9001:2000/CE/CNS12681

FOR USE

ALL FIRE ALARM SYSTEMS UL/NFPA



WIRING INFORMATION



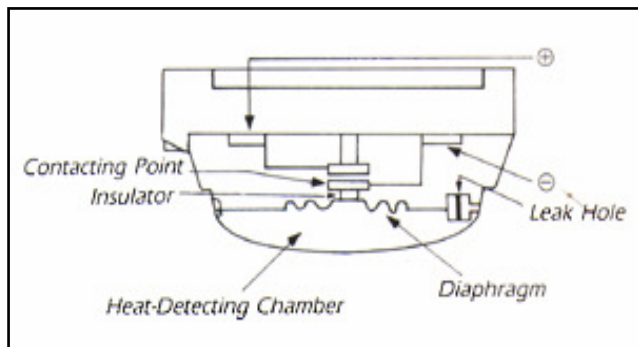
DETECTOR STRUCTURE

Appearance	Weight	Diameter	Height
Ivory	170g.	10.2cm	4.6cm

EFFECTIVE WARNING AREA

Height above the ground	Below 3- 4 meters	4-8meter
Buliding	20-30 M ²	15-20 M ²

MOUNTING



DUCUMENTATION DATASHEET

The interior and exterior structure of this detector is specially designe featuring with beautiful appearance, reliable constant temperature, accurate performance and easier maintenance and longer life. The temperature sensing device is UL approved product.

The function of main unit and breaking-line base is supplementary. Alarm can be made by the main unit in case of breaking to reach perfect performance of the fire preventio system.

Humidity resistance:

Since the head is of close type, exterior humidity, damp, and dust are less influential to its performance.

Dust resistance:

The temperature sensing head is close type, more testant to dust will be minimized and the maintenance intervals can be lengthened.

Line features:

The detector will lock any incoming heat and dispatch fire information if it reaches the warning point to the switchboard throug currentlimit resistance and diode for alarming. The line normally is in NO position and NC is produced when in action.

DESCRIPTION

Aluminium made heat detector concentrating plate and PC Material fire prevention casing detector process during fire indication LAMP lights LED when detector is activated

Specification

TYPE	FPE.CL-183
Working voltage	12-32 V (DC)
Detecting temperature	57 C/135 F
Applicable humidity	0-95 %RH
Supervising current	DC-0mA
Working current	DC-100mA (MAX)
Sensibility	Inspection as per CNS 8874 standard